



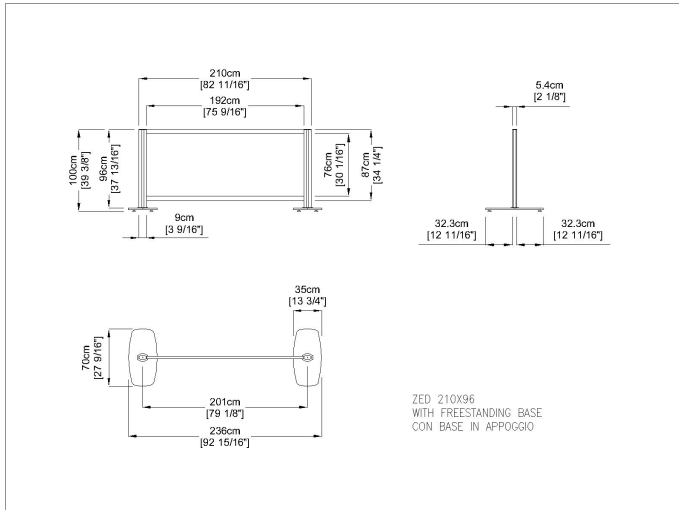
## Description

ZED#2100961SB8MI

Designer: Riccardo Giovanetti

Zed represents a family of products designed to organize the outdoor space according to multiple areas dedicated to different functions. Zed is a partition system consisting of a supporting structure in extruded aluminum, completed by painted steel bases. The aluminum frame allows the insertion of a wide range of outdoor fabrics. Zed is divided into a wide range of accessories: acoustic panels, coat hangers, signs, vases and plant holders make the collection extremely versatile.

Drawings

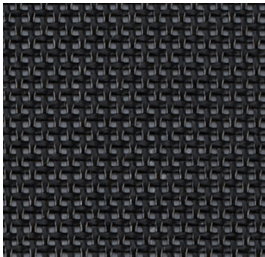


Divider  
210 x 96

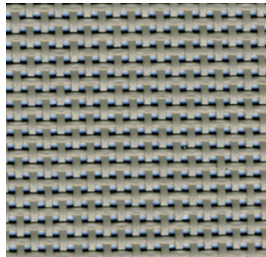
## Materials

### Micro-Mesh fabric

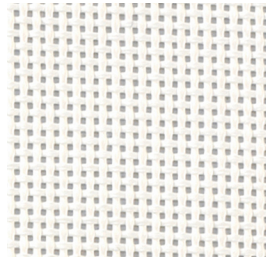
This fabric allows natural air flow and has an excellent resistance to wind, ensuring a pleasant shading at the same time. Suggested to those who want a surely eye-catching alternative fabric. Its fibre composition, taking advantage of the "Preconstraint" technology, guarantees an exceptional resistance to tearing, ultraviolet light and mould. 410 gr/m<sup>2</sup>.



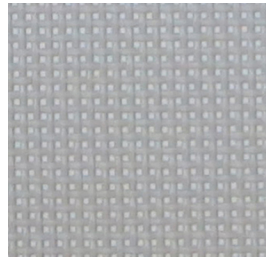
M00 Nero  
5005



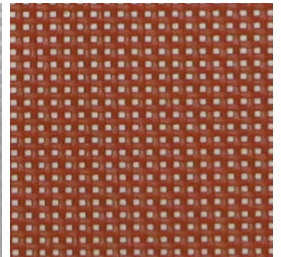
M01 Cenere  
5014



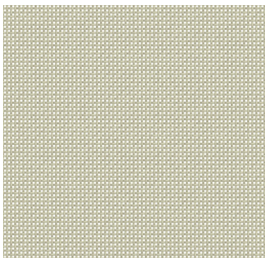
M03 Bianco  
5001



M08 Gris Platine  
5374



M09 Ambra  
5016



M13 Sage  
50880

### Finishes

The materials used have been specifically selected and treated to maintain our products durability and consistency over time. The lumber we source is the best available to guarantee structural integrity and strength of the product. The aluminum profiles are powder coated or anodized to ensure a longer durability in time. The colors may differ from the real ones.



ANODIC

Images





## Product Sheet

### Suggested Products



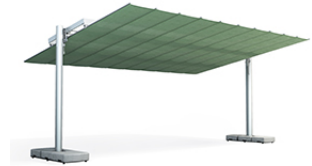
Flexy  
Twin



Flexy



Flexy  
Zen



Flexy  
Large