



Description

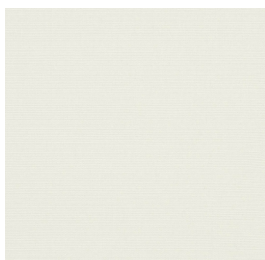
PAGODA

Pagoda develops through a curved and visually light roof, composed of two identical and opposite bodies: the upper one protects from the sun and rain, while the lower part defines a large vaulted ceiling that uniformly diffuses the internal light. The project elaborates the image of straw parasols through a new formal solution.

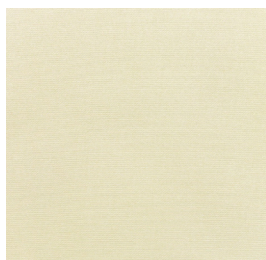
Materials

Solution dyed Acrylic Fabric

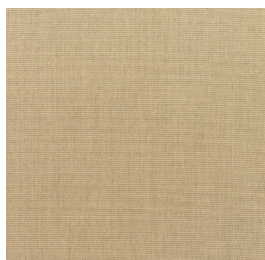
Designed for outdoor use, the solution (spun) dyed acrylic fabric resists salt water, chlorine and any type of harsh climate. Colours do not bleed and remain vibrant for a long time. A specific treatment makes the fabric water repellent, mould resistant and protects it from staining. This type of fabric resists the most extreme conditions and is suitable for year-round use in gardens, terraces, pool sides or on-board boats. It's definitely the top choice canopy fabric to select for your Product. UPF 50+ (UV Protection Factor) 280 gr/m2.



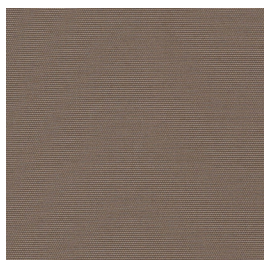
S00 Natural
5404



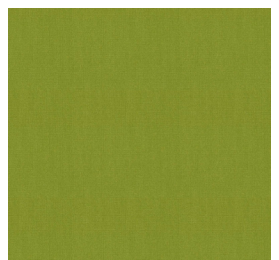
S01 Canvas
5423



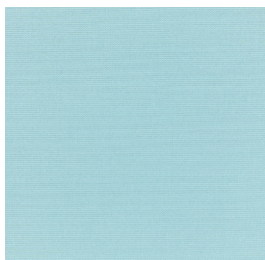
S03 Heather Beige
5476



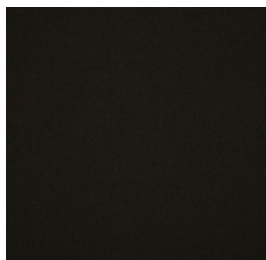
S04 Taupe
3729



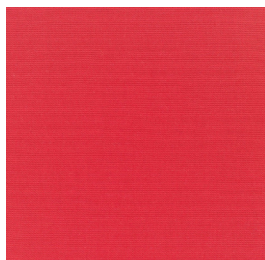
S06 Macao
3738



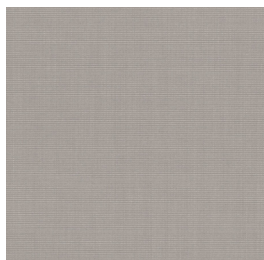
S05 Mineral Blue
5420



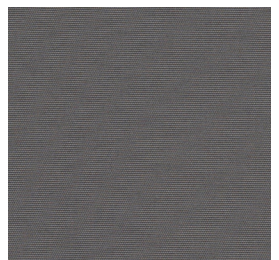
S13 Black
5408



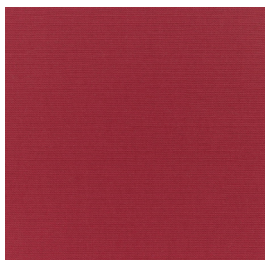
S14 Logo Red
5477



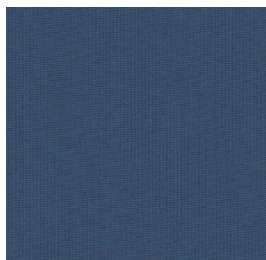
S16 Shingles
3706



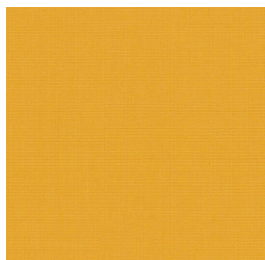
S18 Gray
3737



S29 Burgundy
5436



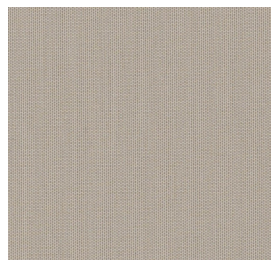
S30 Blue Storm
3942



S33 Mimosa
3938



S34 Flanelle
3757



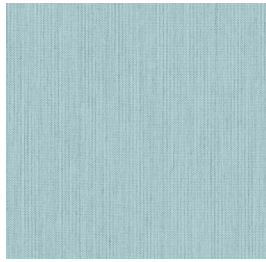
S35 Stone
3988



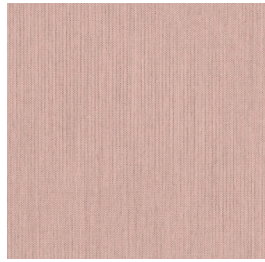
Product Sheet



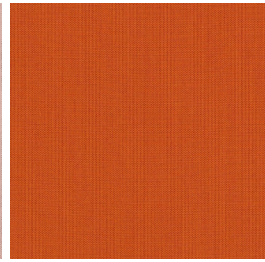
S36 Charcoal
3882



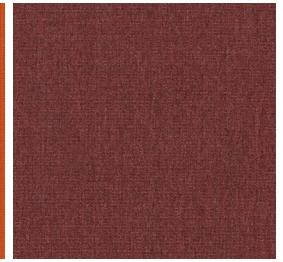
S37 Curacao
3964



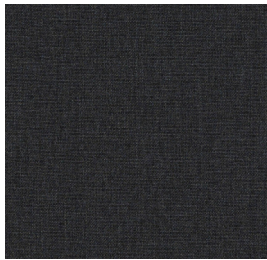
S38 Blush
3965



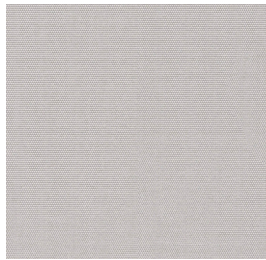
S39 Pumpkin
3969



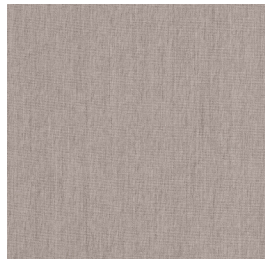
S40 Autumn
3882



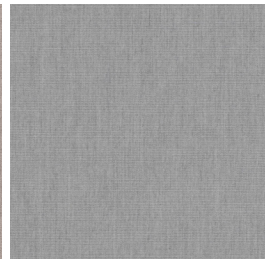
N01 Sooty
10030



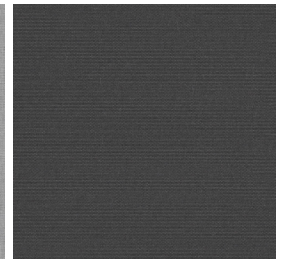
Z02 Silver grey
3741



Z03 Lin
3780



Z09 Lead Chinè
3756



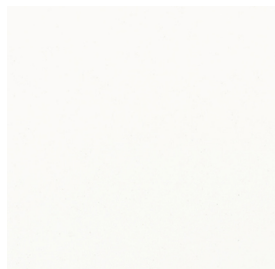
Z15 Carbon
3906

Finishes

The materials used have been specifically selected and treated to maintain our products durability and consistency over time. The lumber we source is the best available to guarantee structural integrity and strength of the product. The aluminum profiles are powder coated or anodized to ensure a longer durability in time. The colors may differ from the real ones.



SILV



BIAN



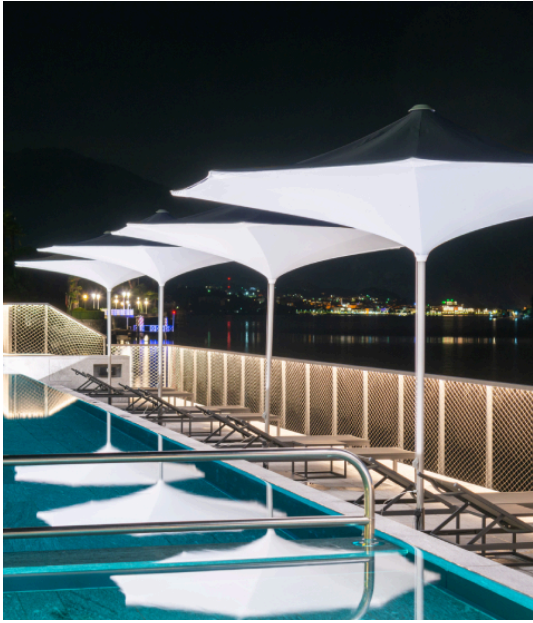
GRAF

Images





Product Sheet





Product Sheet

Suggested Products



Plant



Chester



Diamond



Wing



Totem